

The Extant Landscape, Eromanga Basin

Richard Randall Art Studio, Mt Cootha Botanic Gardens
Friday 30 November - Sunday 2 December 2012

[Lyn Barnes](#)



Artist's statement

As the first artist to record the Cooper Basin in the context of the initial dinosaur dig at Plevna, it is a great privilege to share the images of a landscape that is close to my heart and home.

Artist's biography

The arid landscape of outback Queensland has been inspiration for artist Lyn Barnes since she began painting over twenty years ago. Her work is recognized for its vivid depiction of not only the intense blue skies and red earth of her home, but also of the people of the area that is sometimes referred to as Heartbreak Corner.

Since opening her first gallery in Quilpie twelve years ago, Lyn's work has become popular with outback travellers as they collect her pictures to remind them of their experiences. Successful annual exhibitions in Brisbane have proved to Lyn that Australians who live in cities still have a love of outback landscapes and lifestyle.

The paintings Lyn produces in her studio at Eagle Gallery in Quilpie are held in both private and corporate collections throughout Australia and overseas. She is regularly engaged by art groups as a tutor.

Catalogue of works:



On Nappa Merrie

Pastel on Paper

Outside Dimension: 58cm x 42cm

Price: \$695.00



In the Kyra Sandhills

Pastel on Paper

Outside dimension: 87 x 108 cm

Price: \$2 750.00

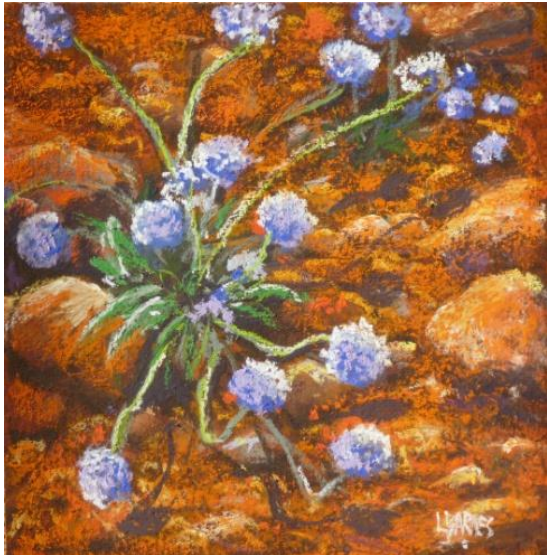


Storm in the Mulga

Pastel on Paper

Outside Dimension: 50cm x 50cm

Price: \$695.00



Cornflowers 1

Pastel on Paper

Outside Dimension: 50cm x 50cm

Price: \$695.00



Dig Site at Plevna

Oil on linen

Outside Dimension: 120cm x 60cm

● SOLD: Price: \$2 950.00