

# The Extant Landscape, Eromanga Basin

Richard Randall Art Studio, Mt Cootha Botanic Gardens  
Friday 30 November - Sunday 2 December 2012



## [Wim de Vos](#)

### **Artist's statement**

The broad open spaces of the outback landscape with its huge skies are awe inspiring. Colour and space complement the textures in the huge range of flora, all combining into a dynamic whole.

Within this, is the emotional content, in that there is a presence in the Australian landscape that has a timelessness, and yet a directness of survival in being. It is this that excites me to paint very quickly, this inspiration; a notation in paint.

The image is painted from memory, and reflects the landscape in full blinding sunlight with its dryness, and yet pockets of moisture, with a presence of life forms past. There is for me always the important factor in making, in that the work has to ultimately, Win.

I hope you enjoy viewing my experience.

### **Artist' biography**

Wim de Vos is a practicing artist whose repertoire includes painting, printmaking, sculpture and artists books. He was born in the Netherlands in 1947 and migrated to Australia with his family in 1959. From the mid 60's to the late 70's Wim was involved in Graphic design, the family window display business and the popular music scene. He played with a number of well-known rock bands and Australian singers in many of Brisbane's discos and performance venues. His bands were support acts with such overseas greats as the Hollies, The Beach Boys, The Kinks, Roy Orbison, and Santana, to name a few.

His study credits include both studies in Commercial Art, and Fine Art with honours in Printmaking at Queensland College of Art. He undertook post graduate studies at the Jan van Eyck Academie Maastricht, the Netherlands, specialising in etching, lithography, and bookmaking during 1981-82.

Wim has exhibited regularly in Queensland, interstate and internationally since 1979. His work is represented in public and private collections and publications in Australia, USA, UK, and the Netherlands.

Wim has taught extensively in public and private institutions since 1983 throughout Australia and has judged many regional art exhibitions in Queensland over the years. He conducts mentoring sessions and regular classes with Adele Outteridge at the Studio West End, Brisbane, Queensland, Australia.

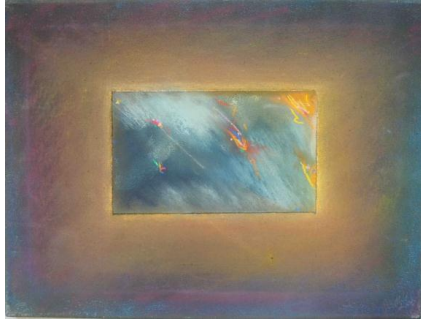
## Catalogue of works



### **Dawn, Mulga**

Pastel on canvas on paper  
Image size: 305 x 405 mm

Framed Price: \$225



## **Flight**

Pastel on canvas on paper  
Image size: 305 x 405 mm

Framed price: \$225



**Sunset with Parrots**

Oil on canvas, Diptych  
Image size: 404 x 810 mm

● SOLD: Framed Price: \$450



**Afternoon Storm**

Oil on canvas

Image size: 305 x 915 mm

Framed Price: \$450



## **Bundoona Light**

Oil on canvas

Image size: 915 x 1835 mm

Framed Price: \$2,250